

Key Knowledge

A plant



A living thing that usually grows from the ground.

Garden Plant

A flower grown especially in a garden.  
Some common garden plants to be able to recognise and name:

- Rose
- Daffodil
- Sunflower
- Tulip

Wild Plant

A wild plant will grow by itself. It does not need to be cared for.

Some common wild plants to be able to recognise and name:

- Daisy
- Dandelion
- Buttercup

Deciduous Trees



Deciduous trees lose their leaves in the autumn every year.

Their leaves are generally broad, flat and have veins running through them.

Evergreen Trees



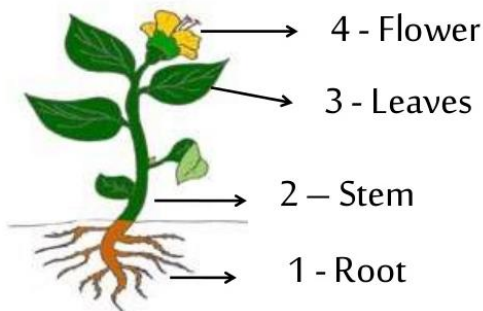
Evergreen trees have green leaves all year round. Their leaves are generally thick, waxy and narrow like needles.

Seed



The part of a flowering plant that can develop into a new plant.

Parts of a Plant



Vocabulary

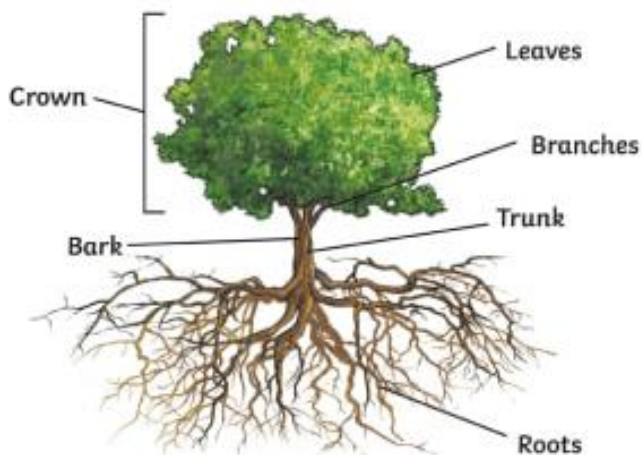
**Root** - The part of a plant that grows underground.

**Flower** - the part of a plant that is often brightly coloured and grows at the end of the stem.

**Stem** - the thin, upright part of a plant on which the flowers and leaves grow.

**Leaf/leaves** - the part of a tree or plant that are flat, thin and usually green.

Parts of a Tree



What Plants Need to Grow

